

Sampling-based Bayesian approaches reveal the importance of quasi-bistable behavior in cellular decision processes on the example of the MAPK signaling pathway in PC-12 cell lines

Antje Jensch, Caterina Thomaseth, Nicole E Radde

October 18, 2016

Additional file 9:
Simulation-based classification of sample trajectories with varying minimal switching times

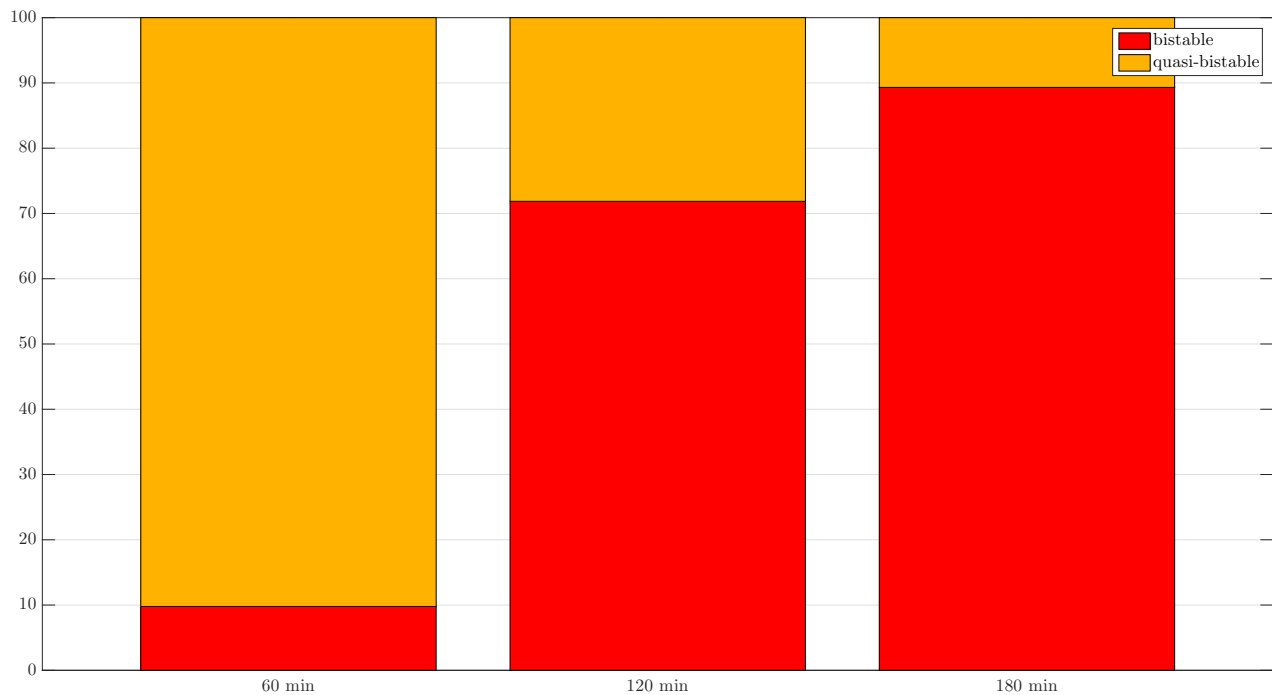


Figure 1: The 60 min case represents the full MCMC sample. For the 120 (180) min case all quasi-bistable trajectories that switch between 60 and 120 (180) min were filtered out.