

Sampling-based Bayesian approaches reveal the importance of quasi-bistable behavior in cellular decision processes on the example of the MAPK signaling pathway in PC-12 cell lines

Antje Jensch, Caterina Thomaseth, Nicole E Radde

October 18, 2016

Additional file 10:
Classification of sample trajectories with varying total ERK concentration

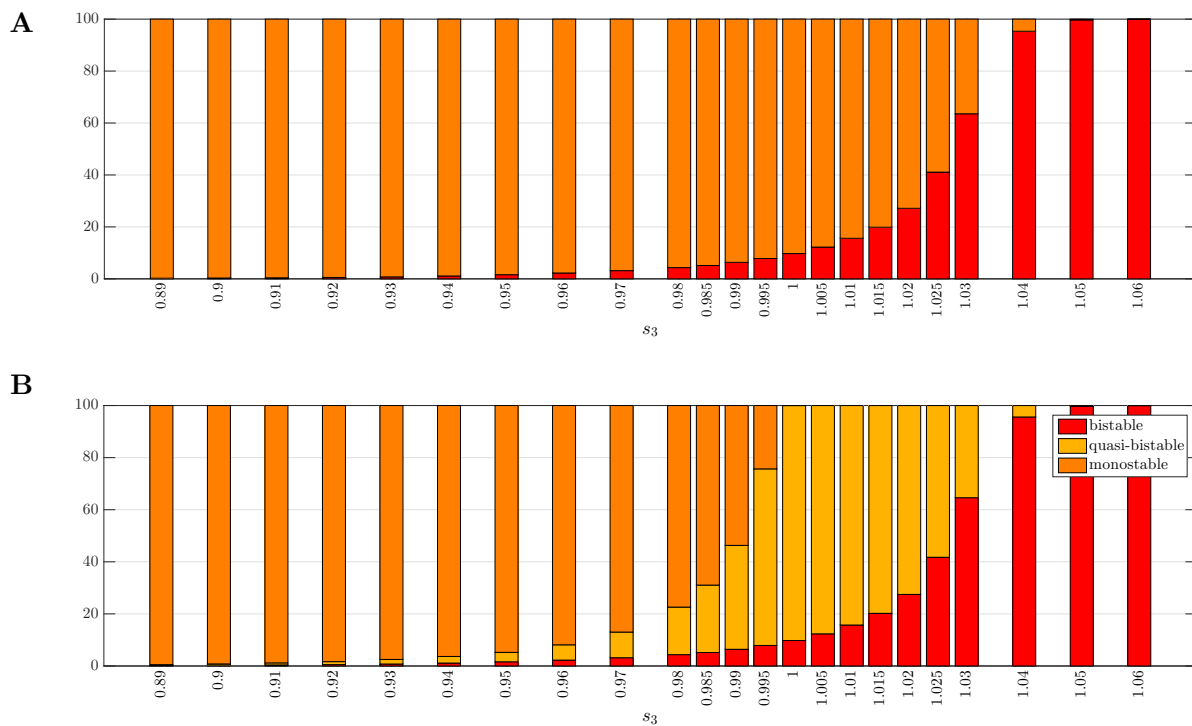


Figure 1: A. Steady state analysis via the CBA and classification into monostable and bistable trajectories. B. Simulation-based classification into bistable, quasi-bistable and monostable trajectories.